



# Neuron Navigator 1 Polyclonal Antibody

|                           |   |
|---------------------------|---|
| <b>Catalog No</b>         | YP-Ab-12762   |
| <b>Isotype</b>            | IgG   |
| <b>Reactivity</b>         | Human;Mouse   |
| <b>Applications</b>       | IHC;IF;ELISA  |
| <b>Gene Name</b>          | NAV1  |
| <b>Protein Name</b>       | Neuron navigator 1  |
| <b>Immunogen</b>          | Synthesized peptide derived from Neuron Navigator 1 . at AA range: 510-590  |
| <b>Specificity</b>        | Neuron Navigator 1 Polyclonal Antibody detects endogenous levels of Neuron Navigator 1 protein.   |
| <b>Formulation</b>        | Liquid in PBS containing 50% glycerol, 0.5% BSA and 0.02% sodium azide.   |
| <b>Source</b>             | Polyclonal, Rabbit,IgG  |
| <b>Purification</b>       | The antibody was affinity-purified from rabbit antiserum by affinity-chromatography using epitope-specific immunogen.   |
| <b>Dilution</b>           | IHC: 1/100 - 1/300. ELISA: 1/40000.. IF 1:50-200  |
| <b>Concentration</b>      | 1 mg/ml   |
| <b>Purity</b>             | ≥90%  |
| <b>Storage Stability</b>  | -20°C/1 year  |
| <b>Synonyms</b>           | NAV1; KIAA1151; KIAA1213; POMFIL3; STEERIN1; Neuron navigator 1; Pore membrane and/or filament-interacting-like protein 3; Steerin-1; Unc-53 homolog 1; unc53H1   |
| <b>Observed Band</b>      | 200kD   |
| <b>Cell Pathway</b>       | Cytoplasm, cytoskeleton . Associates with a subset of microtubule plus ends. Enriched in neuronal growth cones (By similarity). .   |
| <b>Tissue Specificity</b> | Broadly expressed at low levels. Expressed at high levels in heart, skeletal muscle and placenta.   |
| <b>Function</b>           | developmental stage:Expressed in fetal brain and heart.,function:May be involved in neuronal migration.,similarity:Belongs to the Nav/unc-53 family.,subcellular location:Associates with a subset of microtubule plus ends. Enriched in neuronal growth cones.,subunit:Interacts with tubulin.,tissue specificity:Broadly expressed at low levels. Expressed at high levels in heart, skeletal muscle and placenta.,   |
| <b>Background</b>         | This gene belongs to the neuron navigator family and is expressed predominantly in the nervous system. The encoded protein contains coiled-coil domains and a conserved AAA domain characteristic for ATPases associated with a variety of cellular activities. This gene is similar to unc-53, a Caenorhabditis elegans gene involved in axon guidance. The exact function of this gene is not known, but it is thought to play a role in neuronal development and regeneration. Alternative splicing results in multiple transcript variants. [provided |



by RefSeq, Nov 2009],

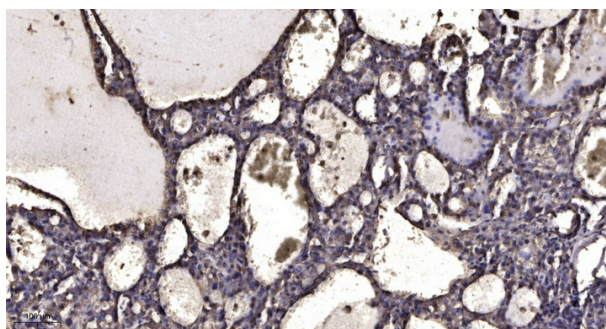
**matters needing attention**

Avoid repeated freezing and thawing!

**Usage suggestions**

This product can be used in immunological reaction related experiments. For more information, please consult technical personnel.

**Products Images**



Immunohistochemical analysis of paraffin-embedded human liver cancer. 1, Antibody was diluted at 1:200(4° overnight). 2, Tris-EDTA,pH9.0 was used for antigen retrieval. 3,Secondary antibody was diluted at 1:200(room temperature, 45min).